

# 400i

Moderate, multi-use fume extraction unit

# PUREX

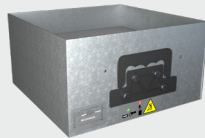
CLEAN AIR FOR EVERYONE



## Description & features

- Clear & informative graphic display
- Highest grade HEPA and carbon technology
- Automatic electronic flow control - maintains a constant extraction rate even as the filter blocks
- Gas and particle sensors to warn the operator
- Adjustable airflow

## Filters

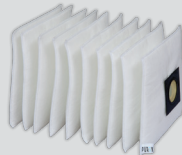


Main Filter Code

113505C

Description

HEPA/Chemical



Pre-Filter Code

111057

Description

F6 Labyrinth

## Specification

| Voltage            | 120v                 | 230v     |
|--------------------|----------------------|----------|
| Volume Part Number | OLX4013D             | OLX4010D |
| Vacuum Part Number | 080411ID             | 080410ID |
| Wattage            | 1.2kW                |          |
| Frequency          | 50Hz / 60Hz          |          |
| Cabinet Height     | 1070mm               |          |
| Cabinet Width      | 465mm                |          |
| Cabinet Depth      | 528mm                |          |
| Cabinet Weight     | 50kg                 |          |
| Airflow            | 400m <sup>3</sup> /h |          |
| Sound Level        | <60dBa               |          |

## Machine supplied with

- 1 x Main Filter • 1 x Pre-filter • 1 x Connection Kit • 1 x Power Cable • 1 x Manual

Find out more: [Wpurex.co.uk](http://Wpurex.co.uk) | [T +44 \(0\)1405 746030](tel:+44(0)1405746030) | [E purex@purex.co.uk](mailto:purex@purex.co.uk)

Registered Office: Purex International Limited, QWP House, Island Drive, Capitol Park, Thorne, Doncaster DN8 5UE  
Registered No. 5136616 England | VAT No. GB842 5025 49 | WEEE Producer Registration Number: WEE/CE0067TX  
\*Goods are subject to change | \*Illustrations are 3D created visual representations

# 400i

Moderate, multi-use fume extraction unit

# Options

## Main filter

## Pre-filter

## Connection kits

| Code    | Description          | Code    | Description                 |
|---------|----------------------|---------|-----------------------------|
| 113508  | Chemical             | 113504  | HEPA / Chemicals            |
| 113505P | Chemical             | 113512  | HEPA / Chemical (Cleanroom) |
| 113809  | HEPA                 | 113669  | HEPA / Chemical (Cleanroom) |
| 113662  | CSA Chemical         | 113505H | HEPA (Hydrophobic)          |
| 113579  | HEPA / Twin Chemical | 113513  | Solvent Lock                |
| 113668  | HEPA / Twin Chemical | 113531  | Pleated Bag                 |
| 111097  | F8 / F9 Labyrinth    |         |                             |

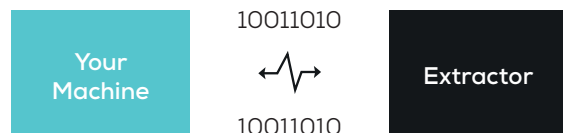
If you do not see a connection kit that fits your machine or pipework, please contact Purex or your representative

| 100032  |             |                      | 100043   |             |                      | 100171                                  |             |                      |
|---|-------------|----------------------|--|-------------|----------------------|---|-------------|----------------------|
| Hose End Diameter                                     | Hose Length | Purex Inlet Diameter | Hose End Diameter                                      | Hose Length | Purex Inlet Diameter | Hose End Diameter                       | Hose Length | Purex Inlet Diameter |
| 50mm  | 3m          | 80mm                 | 50mm   | 6m          | 80mm                 | 125mm                                   | 3m          | 80mm                 |
| Connect to 50mm diameter pipe/port or Purex valve<br> |             |                      | Connect to 50mm diameter pipe/port or Purex valve<br>  |             |                      | Connect to 125mm diameter pipe/port<br> |             |                      |
| 120288  |             |                      | 120297   |             |                      | 120299                                  |             |                      |
| Hose End Diameter                                     | Hose Length | Purex Inlet Diameter | Hose End Diameter                                      | Hose Length | Purex Inlet Diameter | Hose End Diameter                       | Hose Length | Purex Inlet Diameter |
| 100mm   | 2.3m        | 80mm                 | 100mm  | 2m          | 80mm                 | 80mm                                    | 3m          | 80mm                 |
| Connect to 100mm diameter pipe/port<br>               |             |                      | Connect to 100mm diameter pipe/port or Purex valve<br> |             |                      | Connect to 80mm diameter pipe/port<br>  |             |                      |

## Interfacing

Interfacing can remotely start the Purex machine when the connected machine starts.

Interfacing can also warn the connected machine when the Purex machine is in alarm.



Take a look through our [Interfacing Guide](#) to see our extensive range of options